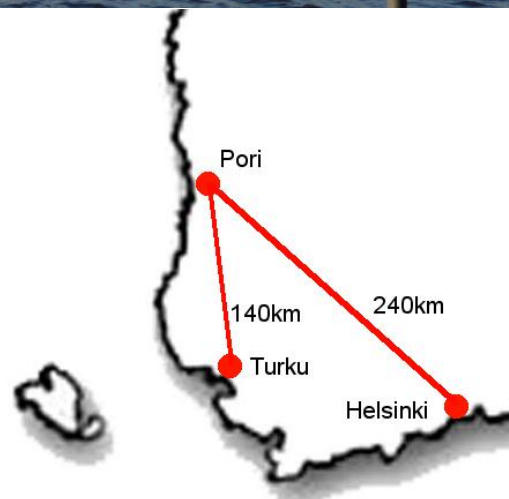


# Nordic Marathon Championship 2011 in Pori

## May 27<sup>th</sup>-29<sup>th</sup>

### Juniors, Seniors, Masters

The Finnish Canoe Federation and Melamajavat welcome all paddlers to the Nordic Marathon Championship in Pori, Finland



## **Championship classes and distance of races:**

Saturday 28<sup>th</sup> May

K-1 Seniors Men	30km
K-1 Senior Women	25km
K-1 Men and Women 18	25km
K-1 Men and Women 16	17km
K-1 Masters from 35 years	21km
K-1 Masters 60 and over	17 km
C-1 Seniors Men	17km
C-1 Men 18 and 16	17km

Sunday 29<sup>th</sup> May

K-2 Seniors Men	30km
K-2 Senior Women	25km
K-2 Men and Women 18	25km
K-2 Men and Women 16	17km
K-2 Masters from 35 years	21km
K-2 Masters 60 and over	17 km
C-2 Seniors Men	17km
C-2 Men 18 and 16	17km

Master classes are from 35 years and increase upwards in 5-year intervals.

## **Time and place of the competition**

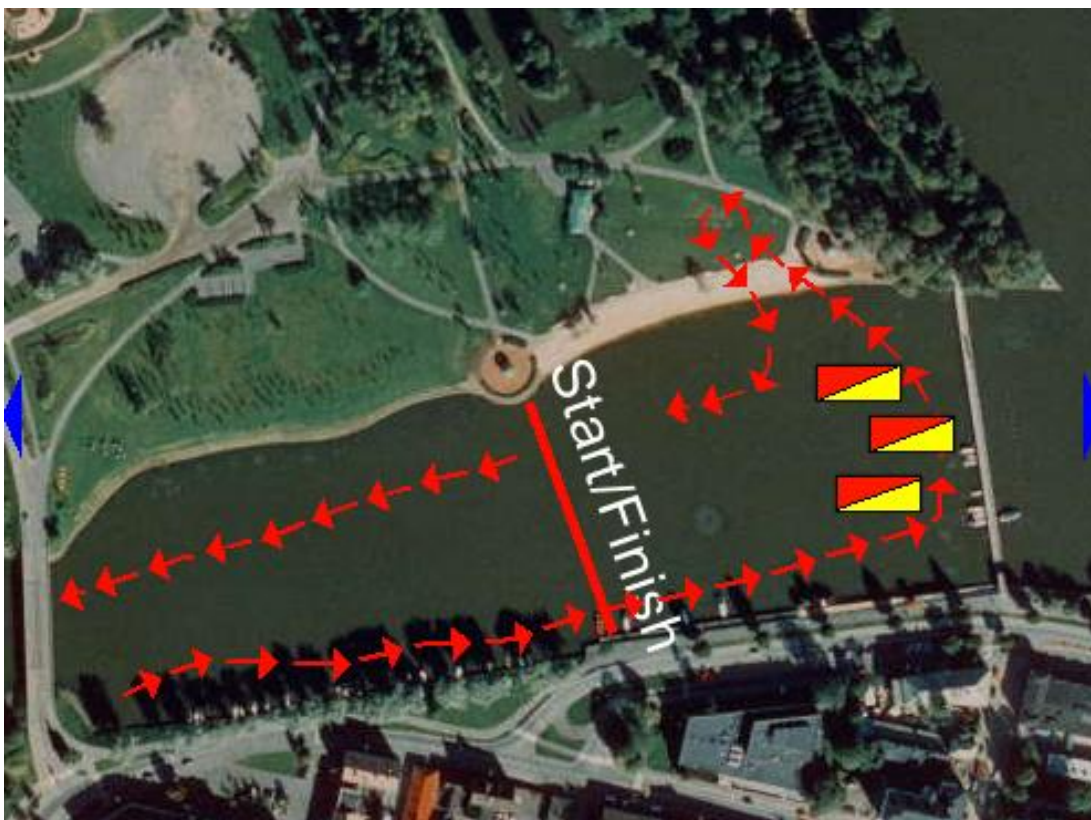
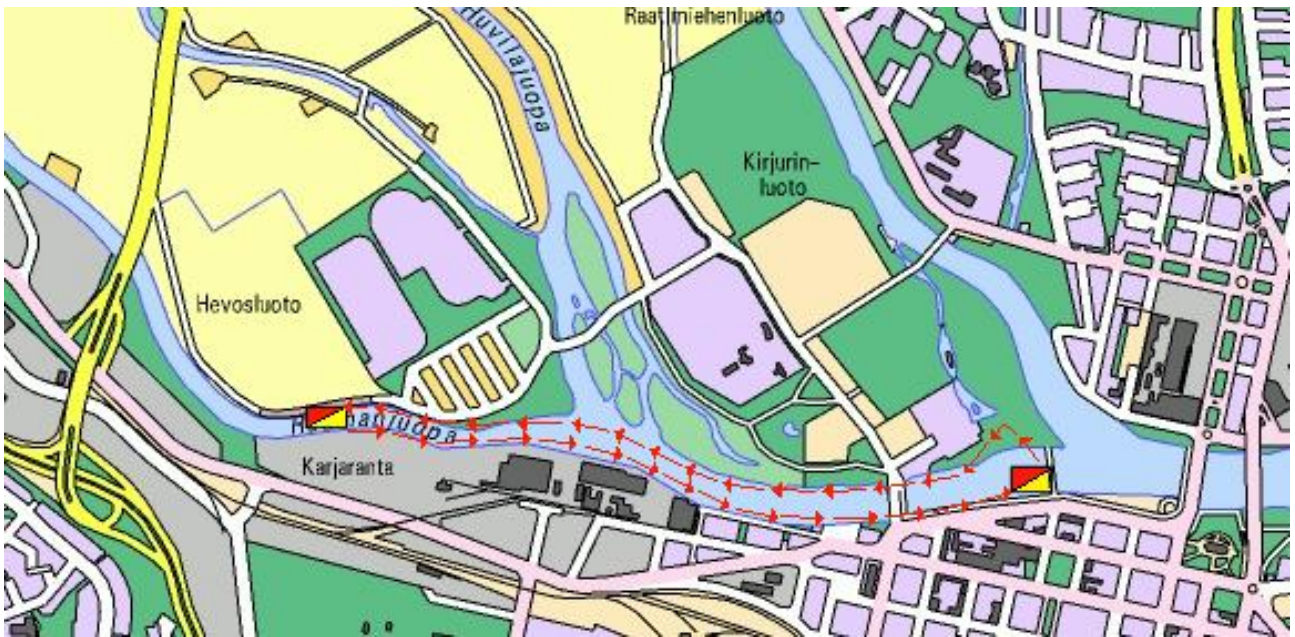
Kirjurinluoto, Pori, first start at 11.00 am. GPS coordinates: 61.492177, 21.786627.

## **Race information and team leaders meeting**

Information regarding rules, course and safety will be held Friday the 27<sup>th</sup> of May at 7 pm Sokos Hotel Vaakuna, Gallen-Kallelankatu 7, Pori. Regulations are according to ICF's rules. Race is open for participants also from outside of the Nordic Countries. Land transport is mandatory in all competition classes except masters 60 and over. All participation is at the participants own risk. K1- & C1-classes compete on Saturday and K2- & C2-classes on Sunday.

### Race course

The race is held on the river of Kokemäenjoki. The course is a round course of 4,3 km with one land transport per round. The land transport is over sand and grass, approx. 60 meters.



### **Registration**

Registration must be done by May 15th 2011. Late entries are not accepted.  
Please send your registration form by e-mail to [nordicmarathon2011@gmail.com](mailto:nordicmarathon2011@gmail.com)  
Registration form in Excel format is available on [www.maratonmelonta.net](http://www.maratonmelonta.net)

### **Starting fee**

Starting fee is 25 € per boat and is to be paid before May 15<sup>th</sup>. Organization will only accept payments by bank transfer.

BIC: OKOYFIHH

IBAN: FI61 5701 5640 0041 72

### **Accommodation**

Accommodation can be found at [http://www.maisa.fi/eng/palv\\_maj\\_pori.html](http://www.maisa.fi/eng/palv_maj_pori.html)

### **Sokos Hotel Vaakuna SOK**

Gallen-Kallelankatu 7, 28100 Pori

tel. +358 (0)20 1234 626

fax +358 (0)2 528 1182

[sales.pori@sokoshotels.fi](mailto:sales.pori@sokoshotels.fi)

<http://www.sokoshotels.fi>



Reservations before May 4<sup>th</sup> (mention "Canoe Marathon"):

Single room + breakfast 60€/day

Double room + breakfast 80€/day

**Further information** about Nordic Championship 2011 can be found on

[www.maratonmelonta.net](http://www.maratonmelonta.net) and [www.nic.fi/~mema](http://www.nic.fi/~mema)

Email: [nordicmarathon2011@gmail.com](mailto:nordicmarathon2011@gmail.com)

Address: Melamajavat, Kolutie 17, 28200 Pori, Finland